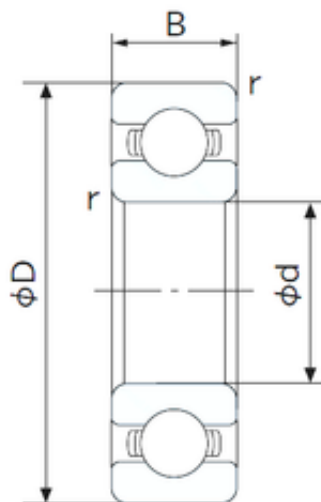




China abec 5 Bearing Supplier



6312 6312zz 6312 2RS Z1V1 Z2V2 Z3V3 Deep Groove Ball Bearing SKF NSK NTN NACHI Koyo OEM

Bearing No. 6312

Size	60x130x31 mm
Bore Diameter	60 mm
Outer Diameter	130 mm
Width	31 mm
d	60 mm
D	130 mm
B	31 mm
C	31 mm
r min.	2.1 mm
da min.	72 mm
Da max.	118 mm
ra max.	2.0 mm
Weight	1.70 Kg
Basic dynamic load rating (C)	82 kN
Basic static load rating (C0)	52 kN
(Grease) Lubrication Speed	5100 r/min
Category	Single Row Ball Bearings
Inventory	0.0
Manufacturer Name	NACHI
Minimum Buy Quantity	N/A
Weight / Kilogram	0
Product Group	B00308
Enclosure	Open
Precision Class	ABEC 1 ISO P0

6312 Bearing 2D drawings and 3D CAD models



China abec 5 Bearing Supplier

Maximum Capacity / Filling Slot	No
Rolling Element	Ball Bearing
Snap Ring	No
Internal Special Features	No
Cage Material	Steel
Internal Clearance	C0-Medium
Inch - Metric	Metric
Long Description	60MM Bore; 130MM Outside Diameter; 31MM Outer Race Width; Open; Ball Bearing; ABEC 1 ISO P0; No Filling Slot; No Snap Ring; No Internal Special Features; C0-Medium Internal Clearance; Steel Cage
Other Features	Deep Groove
Category	Single Row Ball Bearing
UNSPSC	31171504
Harmonized Tariff Code	8482.10.50.68
Noun	Bearing
Keyword String	Ball
Manufacturer URL	http://www.nachiamerica.com
Bore	2.362 Inch 60 Millimeter
Inner Race Width	0 Inch 0 Millimeter
Outside Diameter	5.118 Inch 130 Millimeter
Outer Race Width	1.22 Inch 31 Millimeter
Bore Type	Cylindrical Bore
Configuration	Single Row
Bore Size	60 mm
Width	31 mm
Fillet Radius/Chamfer	2.1 mm
Dynamic Load Rating	82,000 N



China abec 5 Bearing Supplier

Static Load Rating	52,000 N
Limiting Speed - Grease	5,400 rpm
Limiting Speed - Oil	6,300 rpm
Factor fo	13.2
Radial Clearance	0.008 to 0.028 mm
da (min)	72 mm
Da (max)	118 mm
ra (max)	2 mm